

olivia™

THE TRAVEL COMPANY FOR LGBTQ+ WOMEN

AMAZING GALÁPAGOS ADVENTURE

SEPTEMBER 28-
OCTOBER 5, 2023

on board THE BRAND NEW

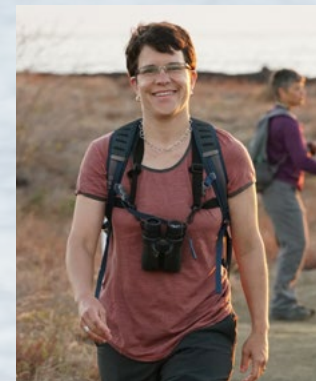
National Geographic/Lindblad Expeditions
ms Islander II

GUAYAQUIL | BALTRA |
DAPHNE MAJOR |
GALÁPAGOS ISLANDS:
BARTOLOMÉ / SANTA CRUZ /
FLOREANA / ESPAÑOLA /
SAN CRISTÓBAL |
PUERTO AROYA



BRAND
NEW SHIP

Olivia is thrilled to once again partner with Lindblad Expeditions/National Geographic for our 8-day/7-night trip to the Galápagos. In 2023, we will be on their new all-suite ship! Join us as we explore the enchanted Galápagos Islands, a region teeming with unusual and remarkable wildlife. Swim and snorkel with playful sea lions, walk among seemingly ancient giant tortoises and watch as blue-footed boobies perform courtship dances. Special permits allow us to head out in kayaks to explore further and a team of seasoned naturalists utilizes underwater video, a Splash-Cam, and video microscopes to provide the richest possible understanding of the abundant wildlife. Experience a place where animals live without fear of humans. Enjoy close encounters with giant tortoises and other fascinating creatures.





YOUR ITINERARY

Thursday, September 28, 2023

Friday, September 29, 2023

Saturday–Tuesday, Sept 30–Oct 3, 2023

Wednesday, October 4, 2023

Thursday, October 5, 2023

Guayaquil, Ecuador

Guayaquil / Baltra, Galápagos / Embark / Daphne Major

Galápagos Islands:

Bartolomé, Santa Cruz, Floreana, Española, San Cristóbal

Puerto Aroya, Galápagos–Disembark / Guayaquil

Guayaquil / Home

Note: Itinerary is subject to change based on national park permits and weather.

INCLUDED

- Hotel accommodations on the nights of Sep 28 and Oct 4
- Accommodations aboard the BRAND NEW National Geographic/Lindblad Expeditions ms *Islander II* Sep 29-Oct 4
- All meals on board the ship and breakfast at hotel
- House drinks and wine (premium brands are additional)
- 1-hour free internet per person per day
- Excursions
- Transfer to hotel on program start date and ship upon arrival, and to hotel and airport upon departure
- Services of Olivia Cruise Director, Lindblad Expedition Leader, Naturalist Staff, National Geographic Trained Photography Instructor, and ship doctor
- Use of kayaks, snorkeling gear, and wetsuits
- Voyage Expedition flash drive (one per household)
- Gratuities to naturalists and ship's crew
- Galápagos National Park entrance fee, port charges, and service taxes (subject to increase)
- Internal Ecuador flights (Guayaquil – Baltra – Guayaquil)
- Olivia assistance throughout



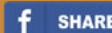
NOT INCLUDED

International airfare to and from Guayaquil, Ecuador, meals not indicated, premium brand alcoholic beverages, internet, LEX Spa services, laundry, and other personal services; NDA charges are not included in the price of the trip but have already been added to your reservation as reflected on your invoice.

olivia™

AMAZING GALÁPAGOS ADVENTURE

SEPTEMBER 28-OCTOBER 5, 2023



Welcome to the newly renovated All-Suite National Geographic *ms Islander II*

After purchasing this vessel last year, the ship went through a huge renovation and is replacing the National Geographic *ms Islander*, which sailed the Galápagos since 2004. Olivia has since done over 20 Galápagos trips with Lindblad and National Geographic, and we are thrilled about their new ship! Onboard, you will find an open Bridge, surrounding teak decks, a forward-viewing area, and two dining areas. Other ship features include a reception area, a Plunge Pool, a Chart Room, the Global Gallery, Library, Marina, Swim Platform, and Zodiac boarding area.



INTRODUCING THE BRAND NEW MS *ISLANDER II*



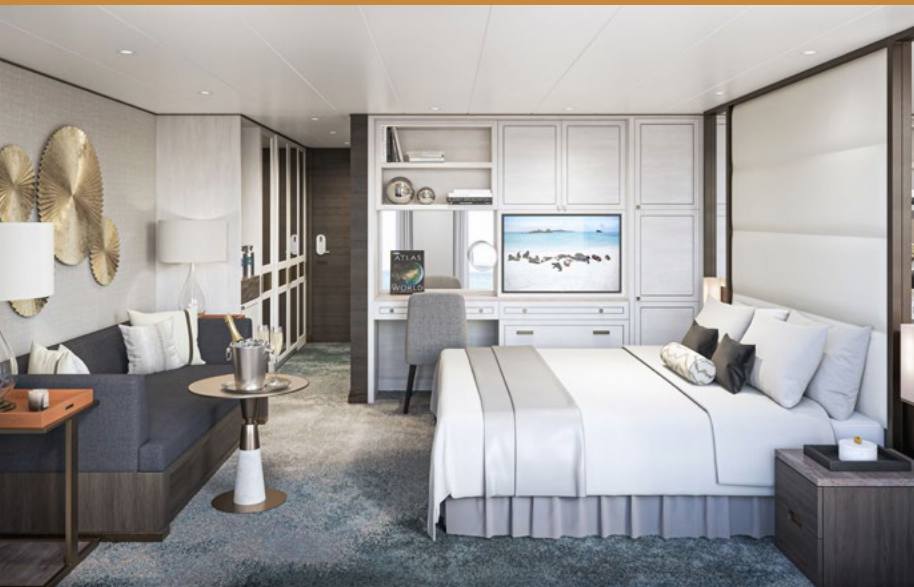
STANDARD SHIP AMENITIES

- Indoor/outdoor dining in the expanded al fresco Patio café, the sophisticated Yacht Club Restaurant, and the Grill.
- The newly reimagined Cove, a gathering spot for pre-dinner Recaps, camaraderie, and craft cocktails or mocktails.
- Science Hub
- Small fitness center and lounge
- LEX Spa with masseuse

ALL-SUITE ACCOMMODATIONS

- 18 suites, 4 Solo suites, and 4 Islander suites
- Convertible king/twin beds with 600-thread count bedding
- Ample closets
- Sofa
- Shower and marble double-sink bathrooms with a collection of organic amenities crafted exclusively for Lindblad Expeditions
- Stocked mini-bar
- In-room coffee and tea
- Wifi
- Flat-screen TV





SUITES

EARLY BIRD \$7,999 PP

REGULAR \$10,399 PP

280 sq. ft. with two large windows, seating area with sofa, lounge chair. 2 twins convert to king.

ISLANDER SUITES

EARLY BIRD \$11,999 PP

REGULAR \$15,599 PP

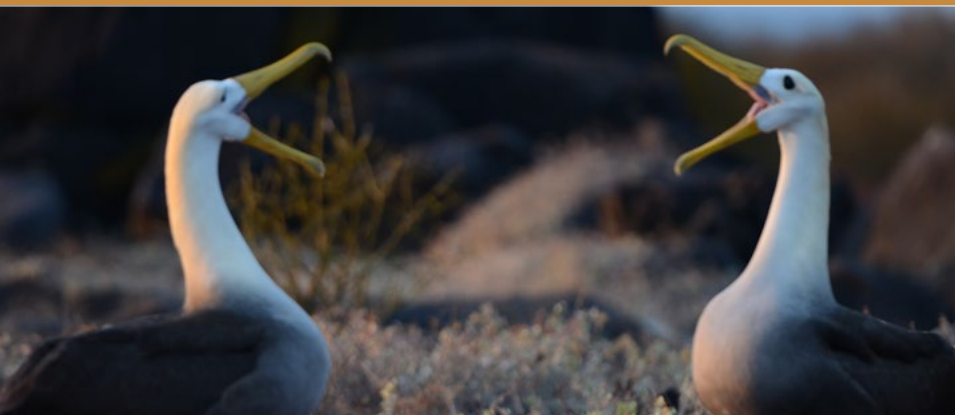
515 sq. ft. with four windows, separate living room with sofa, two lounge chairs, large bath with rain shower and tub. 2 twins convert to king.

SOLO SUITE (LIMITED)

EARLY BIRD \$11,999 PP

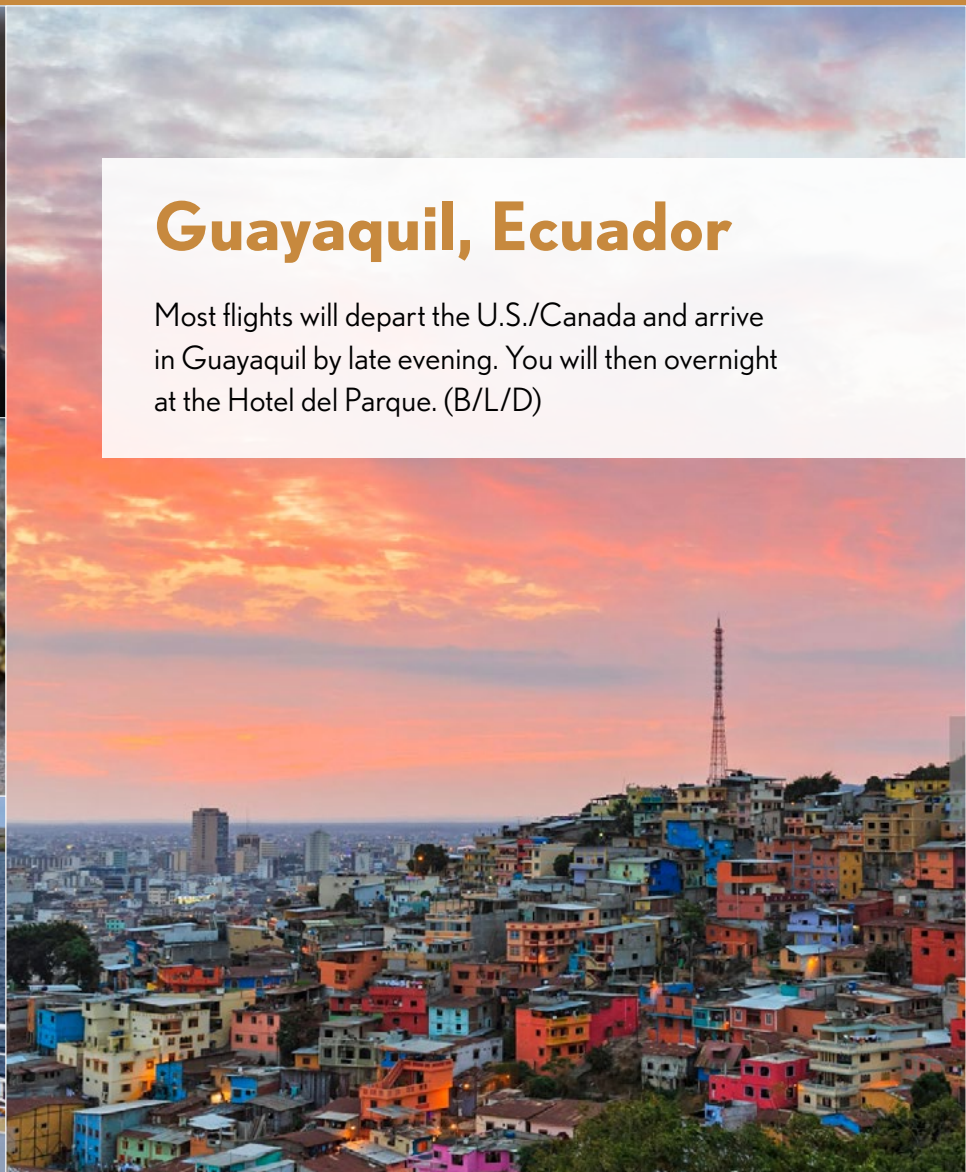
REGULAR \$15,599 PP

For one person (no share). 280 sq. ft. with two large windows, seating area with sofa, lounge chair. 2 twins convert to king.



Guayaquil, Ecuador

Most flights will depart the U.S./Canada and arrive in Guayaquil by late evening. You will then overnight at the Hotel del Parque. (B/L/D)



Guayaquil / Baltra, Galápagos / Daphne Major

This morning fly to Baltra, Galápagos. After lunch we will begin our voyage with a sail by Daphne Major. (B/L/D)





Galápagos Islands:

Although exact routing and islands visited depends on the National Park Service, we may visit the following islands: (B/L/D)

BARTOLOME: Spend the early morning hiking to one of the most iconic views of the archipelago! After breakfast return for some snorkeling and zodiac opportunities. We have a good chance of snorkeling with the Galápagos Penguins!

FLOREANA: At Punta Cormorant, we land on the beach tinted green with olvine crystals. Hike through unique vegetation past a lagoon popular with flamingos and other shore birds to a second beach of fine white sand, known for nesting turtles. At Champion Islet, you will snorkel among sea lions and abundant fish-life, or cruise along the shore by Zodiac, while keeping an eye out for the endangered Floreana Mockingbird. At Post Office Bay, where you're invited to join the 19th century tradition of leaving and taking letters /postcards from the barrel for hand delivery. Paddleboard, kayak or take a Zodiac ride along the coast of Baroness Lookout, named after the early settler and eccentric Eloise Basquet de Wagner. Floreana is an island rich in mystery.

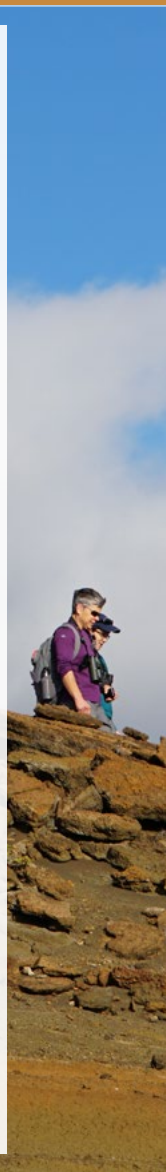
Galápagos Islands:

Although exact routing and islands visited depends on the National Park Service, we may visit the following island: (B/L/D)

ESPAÑOLA: At Gardner Bay, explore the expanse of bright white sand, resting sea lions. Snorkel along the offshore inlets, where marine life is abundant. We are also able to kayak and paddleboard. This afternoon, we visit Punta Suarez, the exclusive home to waved albatross (April-December) and particularly colorful marine iguanas. Española is also a paradise for Darwin's finches, sea lions galore, swallow-tailed gulls, Nazca boobies, and the famous blue-footed boobies.

SAN CRISTÓBAL: Land on a small, sparkling beach at Punta Pitt for a hike up to a plateau where masked, blue- and red-footed boobies all nest and look for endemic Cristobal mockingbirds, lava lizards and other wildlife. Or you may choose a zodiac ride to explore the shore birds and sea life. Sail along this easternmost island for a landing this afternoon at the celebrated expanse of powdery white sand at Cerro Brujo. Kayaking and Paddle boarding is also available.

SANTA CRUZ: We visit Puerto Aroyo, the largest town and headquarters of both the Galápagos National Park and Charles Darwin Research Station. We head to the lush, green highlands to see the giant Tortoises roaming in the wild!





Puerto Aroya, Galápagos – Disembark / Guayaquil

Disembark after breakfast and fly to Guayaquil. Transfer included to the hotel. The late afternoon and evening are free to explore the bustling city. Overnight at the Hotel del Parque. (B/-/-)

PLEASE NOTE: You can depart from Guayaquil on a late-night flight tonight after 8 pm (10/4) if you choose. A day room will be provided until your departure to the airport. An airport transfer is included.

Guayaquil

Hotel check-out is 11 am. Enjoy a complimentary transfer from the hotel to the airport for flights home or on to other adventures. (B/-/-)

Itinerary is subject to changes based on national park permits.

CATEGORY

SUITES

ISLANDER SUITES

SOLO SUITE (LIMITED)

PRICING PP

EARLY BIRD: \$7,999 PP REGULAR: \$10,399 PP

EARLY BIRD: \$11,999 PP REGULAR: \$15,599 PP

EARLY BIRD: \$11,999 PP REGULAR: \$15,599 PP

ABOVE PRICING INCLUDES R/T AIR FROM GUAYAQUIL-GALÁPAGOS.

PRICING DOES NOT INCLUDE NDAS (TAXES, FEES, GRATUITIES) OF \$499 PP, WHICH INCLUDES FUEL SURCHARGE AND \$100 PP GALÁPAGOS NATIONAL PARK FEE *(subject to change)*

VACATION STRETCHERS

Extend your stay with an unforgettable experience in Machu Picchu! Available 9-11 months prior to the trip.



faq

ACTIVITY LEVEL

These trips do require a certain level of mobility, including steep stairwells on the ship, walking on rocky, boulders, or uneven terrain, gentle hiking uphill and getting in and out of panga boats from the ship and on shore. There are no elevators on the ship. If you do have limited mobility that requires assistance, you are required to travel with someone who can assist you.

AIRFARE

Please check our airline discounts page for the latest discounts:

<https://www.olivia.com/airfare-specials>



Book now. Pay later.

Pay over time with fixed
monthly payments.



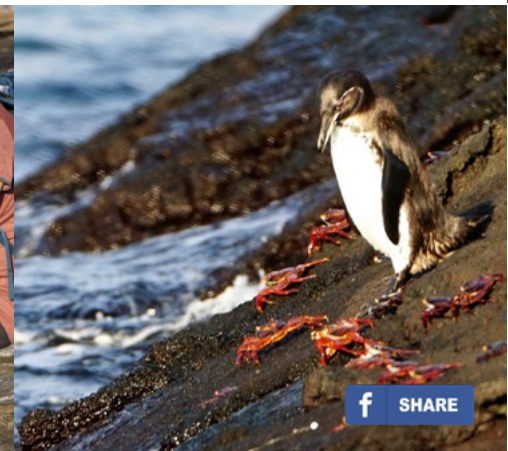
LEARN MORE



oliviaTM



CALL YOUR OLIVIA TRAVEL CONSULTANT
USA & CANADA: 800-631-6277 INTERNATIONAL: 415-962-5700 X1



f SHARE