

oliviaTM

THE TRAVEL COMPANY FOR LGBTQ+ WOMEN

NEW ZEALAND ADVENTURE CRUISE

JANUARY 21-31, 2024

on board

Coral Expeditions' *Coral Geographer*

Wellington • Queen Charlotte
Sound Scenic Cruising •
Kaikoura • Akaroa • Dunedin •
Steward Island & Ulva Island •
Dusky Sound • Fjordland:
Dusky, Doubtful, & Thomson
Sounds • Milford Sound •
Solander Island Cruise • Bluff



We're thrilled to be heading back to New Zealand for the first time since 2015! Join us aboard the *Coral Geographer* for an adventure cruise of a lifetime. We will board in Wellington and spend 10 days exploring the rolling green hills, charming coastal towns, and pristine coastline of the North and South Islands. You'll have the chance to hike a portion of the world-famous Queen Charlotte Track, spot endemic wildlife like the Yellow-eyed Penguin (the world's rarest penguin!), or stroll the quaint colonial streets of Akorua, a historic French settlement nestled in the heart of an ancient volcano. We will cruise through the emerald waters of Fiordland National Park, a UNESCO World Heritage Site, marveling at the ancient rainforest that clings to the shimmering granite cliffs of Milford, Dusky, and Doubtful Sounds. You will have ample opportunities to sample fresh local fare, savor world-renowned New Zealand wines, and enjoy small-batch dining with locally sourced ingredients while on board. Throughout our adventure, we will be guided and educated by a team of onboard naturalists as we keep an eye out for wildlife like whales, dolphins, fur seals, albatross, and more!





YOUR ITINERARY

Sunday, January 21, 2024

Monday, January 22, 2024

Tuesday, January 23, 2024

Wednesday, January 24, 2024

Thursday, January 25, 2024

Friday, January 26, 2024

Saturday, January 27, 2024

Sunday, January 28, 2024

Monday, January 29, 2024

Tuesday, January 30, 2024

Wednesday, January 31, 2024

Wellington, New Zealand

Queen Charlotte Sound Scenic Cruising

Kaikoura, New Zealand

Akaroa, New Zealand

Dunedin, New Zealand

Stewart Island & Ulva Island

Dusky Sound

Fjordland: Dusky, Doubtful, & Thomas Sounds

Milford Sound

Solander Island Cruise / At Sea

Bluff, New Zealand

Note: Itinerary is subject to change.

INCLUDED

- Accommodations for 11 days / 10 nights on board Coral Expeditions' *Coral Geographer*
- Excursions and services on a tailor-made itinerary
- Breakfast, lunch, and dinner; including morning and afternoon teas and 24-hour access to coffee and tea
- Selected beers, wines and spirits are included with lunch and dinner service, as well as soft drinks and juices
- Fresh drinking water at drinking stations
- Daily lecture series about the destinations we will visit
- Daily housekeeping service and turndown
- Wifi available in all guest areas
- Gratuities, port taxes and fees (as covered by your NDAs)
- Personalized Team Olivia assistance throughout

NOT INCLUDED

Airfare home to Wellington, New Zealand and from Queenstown, New Zealand to home, arrival airport transfer to the ship, travel insurance, beer, wine, spirits outside of lunch and dinner service, laundry service, medical attention, and other incidentals.





Launched in March 2021, *Coral Geographer* is purpose-designed to access remote wilderness shores that are inaccessible to larger cruise vessels.

With over 1,000 square meters of open deck space, multiple bars, majority balcony staterooms and suites, the *Coral Geographer* is as comfortable as she is capable. The ship's Xplorer tenders extend the capabilities of the ship by allowing deeper exploration on shore excursions. These 'safari jeeps' of the sea are fast, sturdy, and comfortable and developed to allow easy boarding from the ship and walk-off disembarkation onto remote shores. Able to navigate into shallow bays, disembark onto remote islands, and visit small villages without overwhelming the environment or community, the *Coral Geographer* delivers an intimate onboard atmosphere and world-class expedition experience.

Total Occupancy: 120





STANDARD SHIP AMENITIES

- Gym
- Passenger elevator can access all decks
- Wifi available in all guest areas
- Open Bridge with navigator lounge giving a vantage point of ship operations
- Over 1,000 sq m of open deck space incl. a wrap-around promenade deck w/ panoramic view
- Engine room tours and high level of crew interaction with guests
- Two trademark Xplorer tenders seat all passengers for shore excursions
- Six Zodiacs (tender boats) for more intrepid exploration
- Lecture lounge with multimedia for daily expedition briefings and presentations
- Onboard library
- Gift shop
- Laundry service
- Shallow draft to access remote destinations
- Advanced navigation and propulsion systems
- Advanced stabilizers for enhanced comfort while sailing



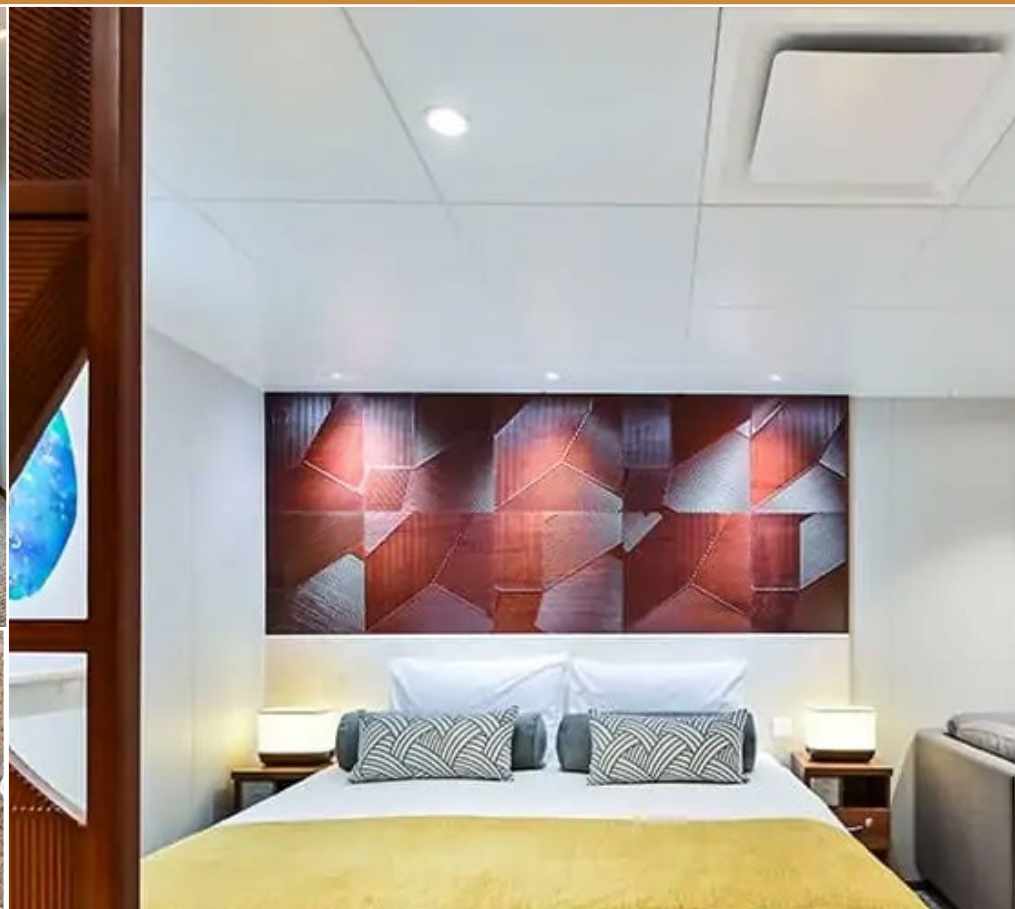
EXPLORER DECK STATEROOM



WHITE HORIZON BATHTUB

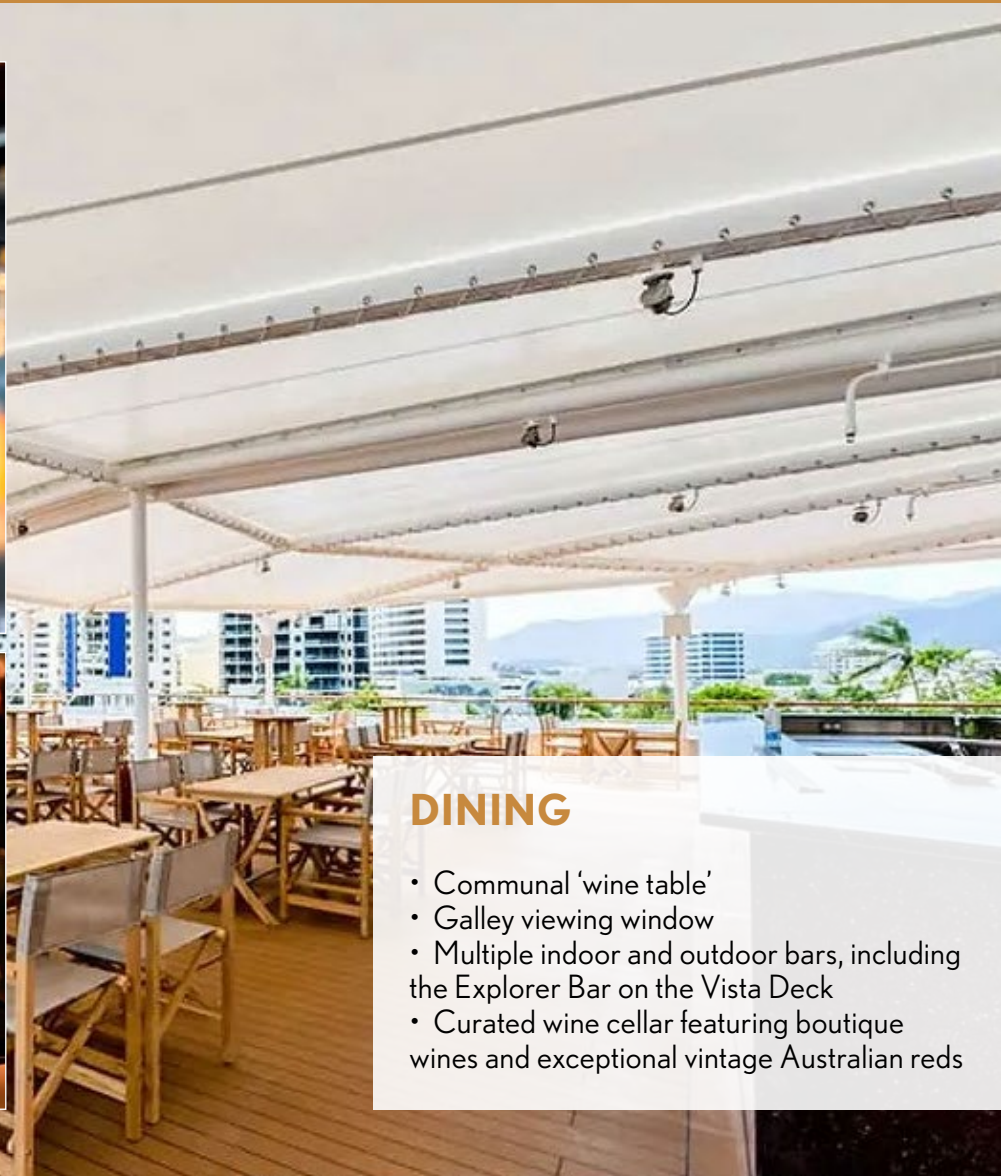


STATEROOM ENSUITE



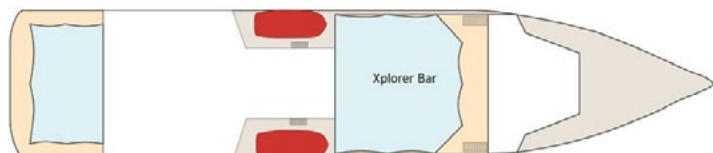
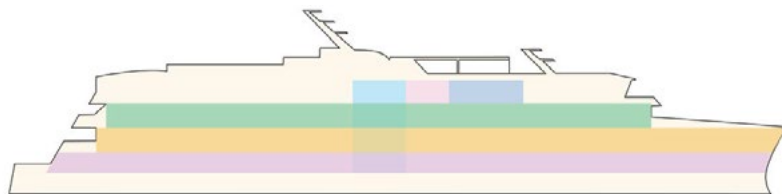
ROOM AMENITIES

- All outside-facing guest cabins with ensuite bathrooms
- Majority have private balcony
- Basic toiletries including shampoo, conditioner, body wash and lotion
- Internationally compatible power outlets

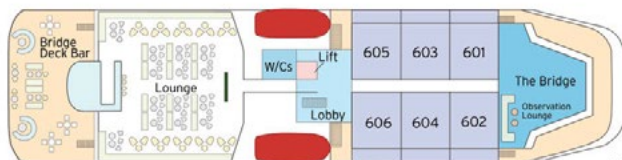


DINING

- Communal 'wine table'
- Galley viewing window
- Multiple indoor and outdoor bars, including the Explorer Bar on the Vista Deck
- Curated wine cellar featuring boutique wines and exceptional vintage Australian reds



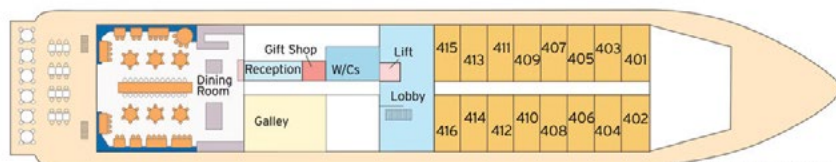
VISTA DECK



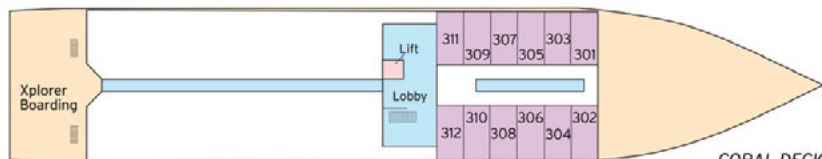
BRIDGE DECK



EXPLORER DECK



PROMENADE DECK



CORAL DECK

Name Coral Geographer
Owners CPC Marine Pty Ltd
Flag Australian
Launching 2021

LOA 93.4 metres
Beam 17.2 metres
Draught 4.5 metres
Gross Tonnage 5516 GT
Construction VARD
Main Engines Caterpillar 3512C
Azimuth Pod Rolls Royce Azipull
Cruising Speed 13.8 knots
Max. passengers 120
Max. crew 48

Tenders 2 Xplorers, 6 Zodiacs

- **BRIDGE DECK BALCONY SUITE**
 • 37.5sqm • Private Balcony • Junior king beds
- **EXPLORER DECK BALCONY STATEROOM**
 • 21.4sqm • Private Balcony • Twin or junior king beds
- **PROMENADE DECK STATEROOM**
 • 17sqm • Picture window • Twin or junior king beds
- **CORAL DECK STATEROOM**
 • 17sqm • Porthole window • Twin or junior king beds



CORAL DECK STATEROOM

EARLY BIRD: \$5,999 PP REGULAR \$7,799 PP

Coral Deck Staterooms are located on the Coral Deck and furnished with Junior King-sized beds (can be separated into two singles), a desk, armchair and a porthole window giving you views of the vistas and natural sunlight. The compact ensuite bathroom has a toilet, shower, and ample storage. (Approximately 180 sq. ft.)



PROMENADE DECK STATEROOM

EARLY BIRD: \$7,999 PP REGULAR \$10,399 PP

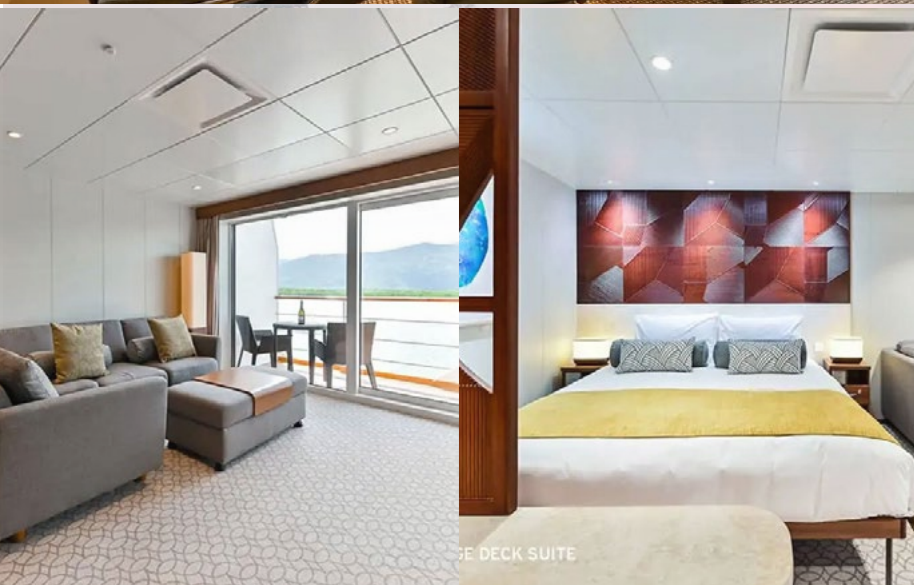
Promenade Deck Staterooms are located on the Promenade Deck and furnished with Junior King-sized beds (can be separated into two singles), a desk, armchair and a large picture window giving you views of the vistas and natural sunlight. The compact ensuite bathroom has a toilet, shower, and ample storage. (Approximately 180 sq. ft.)



EXPLORER DECK BALCONY STATEROOM

EARLY BIRD: \$9,999 PP REGULAR \$12,999 PP

Explorer Deck Staterooms are comfortably furnished with a Junior King-sized bed (can be separated into two singles), a private balcony with seating for two to view the passing coastal vistas, a desk and armchair. The compact ensuite bathroom has a toilet, shower, and ample storage. (Approximately 230 sq. ft.)



BRIDGE DECK BALCONY SUITE

EARLY BIRD: \$13,999 PP REGULAR \$18,199 PP

Spacious and elegant, the Bridge Suites are equipped with a lounge area, complimentary minibar replenished daily, personal coffee machine, Junior King-sized beds, private balcony with outdoor daybed and lounge chairs for two. The unique outside-facing bathroom with floor to ceiling windows will be the feature of the suites, with an infinity bathtub and sky views. Suite guests will also be able to enjoy preferred selections of Australian sparkling, white, or red wines on a complimentary basis at lunch and dinner. (Approximately 403 sq. ft.)



Sunday, January 21, 2024 | Wellington (Embark 5 pm)

Recently named “the coolest little capital in the world” by Lonely Planet, Wellington sits at the Southern tip of the North Island. Surrounded by nature, this compact city is fueled by a powerful mix of creativity, culture, history, and cuisine. Relax at Oriental Bay, Wellington’s golden-sand inner-city beach, or delve into the many museums, art galleries, and theater shows that make up the city’s vibrant cultural scene. On the waterfront, you’ll find one of the best interactive museums in the world: New Zealand’s national museum, colloquially known as Te Papa, meaning ‘our place.’



Monday, January 22, 2024 |

MARLBOROUGH SOUNDS – SHIP COVE & CRUISING QUEEN CHARLOTTE SOUND

20% of New Zealand's coastline is woven through the beautiful Marlborough Sounds, a collection of ancient sunken river valleys filled with the waters of the Pacific Ocean. The region is also famed for its culinary delights, producing nearly 80% of New Zealand's wine and over 70% of New Zealand's salmon and Greenshell Mussels.

We will make a stop at Ship Cove (Meretoto), recognized as Captain James Cook's favorite New Zealand base, and the location of some of the earliest sustained contact between Maori and Europeans. We will have several activity options while anchored here. Hop in an Xplorer tender and cruise the cove looking for marine wildlife. Grab your binoculars and join a fantastic bird watching walk at Motuara Island birdlife sanctuary. Slip on your trekking shoes and walk a section of the Queen Charlotte Track. If the waters are calm, you may even grab a paddle and try your hand at sea kayaking.

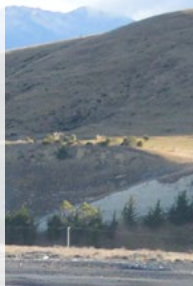
After we raise the anchor, we will cruise the length of Queen Charlotte Sound, taking in the breathtaking scenery while we scan the horizon for marine wildlife.



Tuesday, January 23, 2024 | KAIKOURA

Known for abundant wildlife including dolphins, seals, albatross, and the possible sperm whale sighting, Kaikoura sits in a spectacular location between the rugged Seaward Kaikoura Range and the Pacific Ocean. Seafood lovers will be pleased to know that the town's Maori name means "to eat crayfish."

You will have the option to explore Kaikoura's museums, galleries, and cafes, or join an included tour, such as a whale watching charter or hiking with the Expedition Team on the Kaikoura Peninsula Walkway.

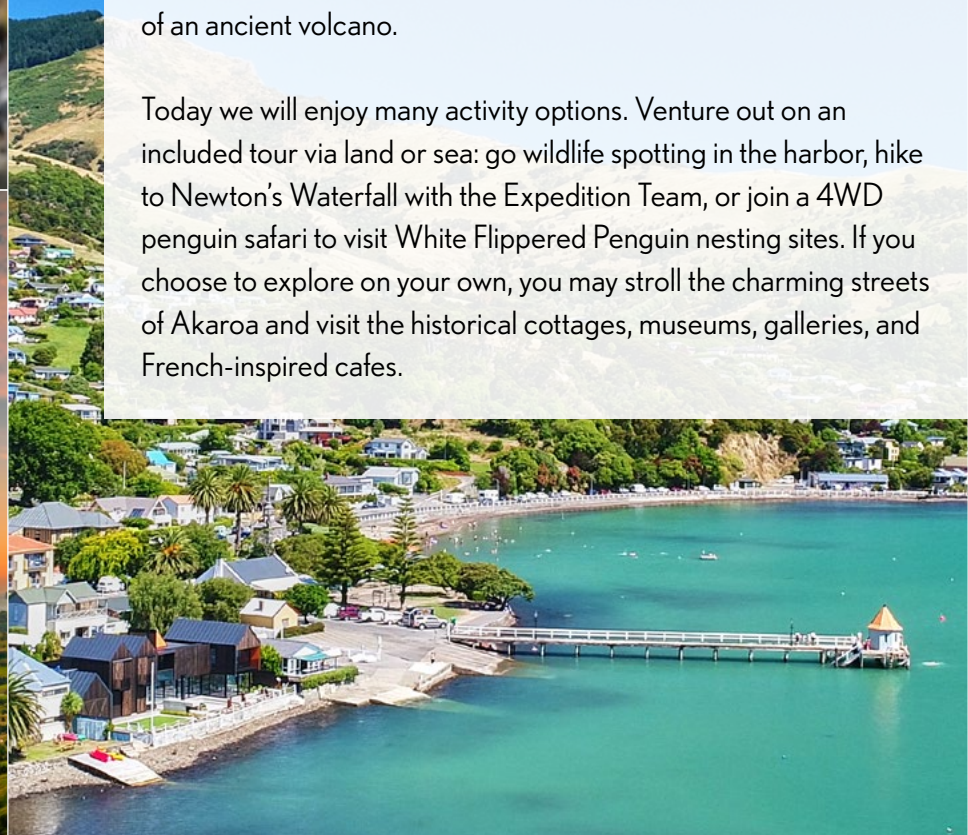




Wednesday, January 24, 2024 | AKAROA

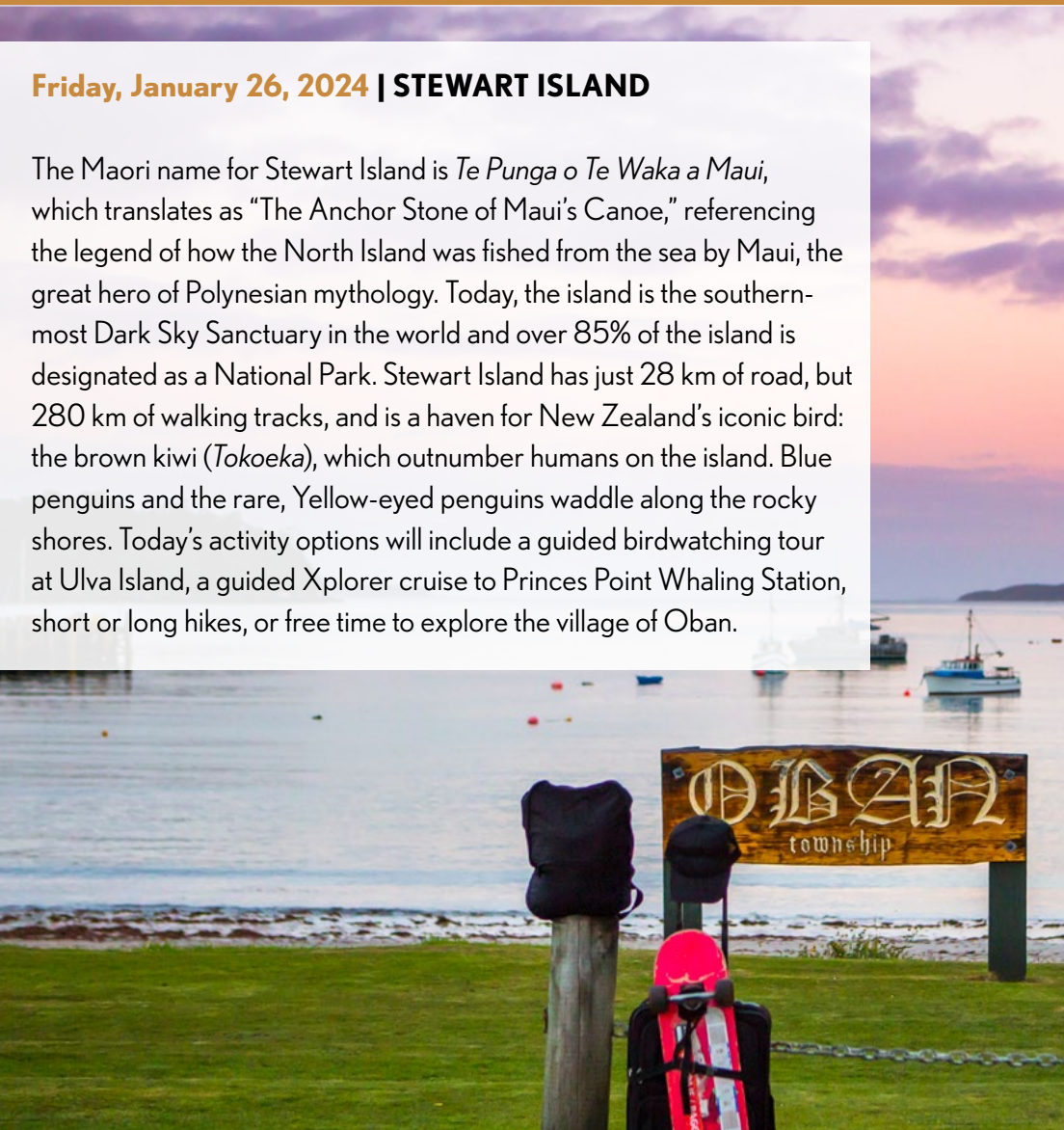
The charming town of Akaroa was the only French settlement ever established in New Zealand. The French-named streets and charming colonial cottages sit within the deep, sheltered Akaroa Harbour, a rocky inlet formed when the sea breached the crater of an ancient volcano.

Today we will enjoy many activity options. Venture out on an included tour via land or sea: go wildlife spotting in the harbor, hike to Newton's Waterfall with the Expedition Team, or join a 4WD penguin safari to visit White Flipped Penguin nesting sites. If you choose to explore on your own, you may stroll the charming streets of Akaroa and visit the historical cottages, museums, galleries, and French-inspired cafes.



Friday, January 26, 2024 | STEWART ISLAND

The Maori name for Stewart Island is *Te Punga o Te Waka a Maui*, which translates as “The Anchor Stone of Maui’s Canoe,” referencing the legend of how the North Island was fished from the sea by Maui, the great hero of Polynesian mythology. Today, the island is the southern-most Dark Sky Sanctuary in the world and over 85% of the island is designated as a National Park. Stewart Island has just 28 km of road, but 280 km of walking tracks, and is a haven for New Zealand’s iconic bird: the brown kiwi (*Tokoeka*), which outnumber humans on the island. Blue penguins and the rare, Yellow-eyed penguins waddle along the rocky shores. Today’s activity options will include a guided birdwatching tour at Ulva Island, a guided Xplorer cruise to Princes Point Whaling Station, short or long hikes, or free time to explore the village of Oban.

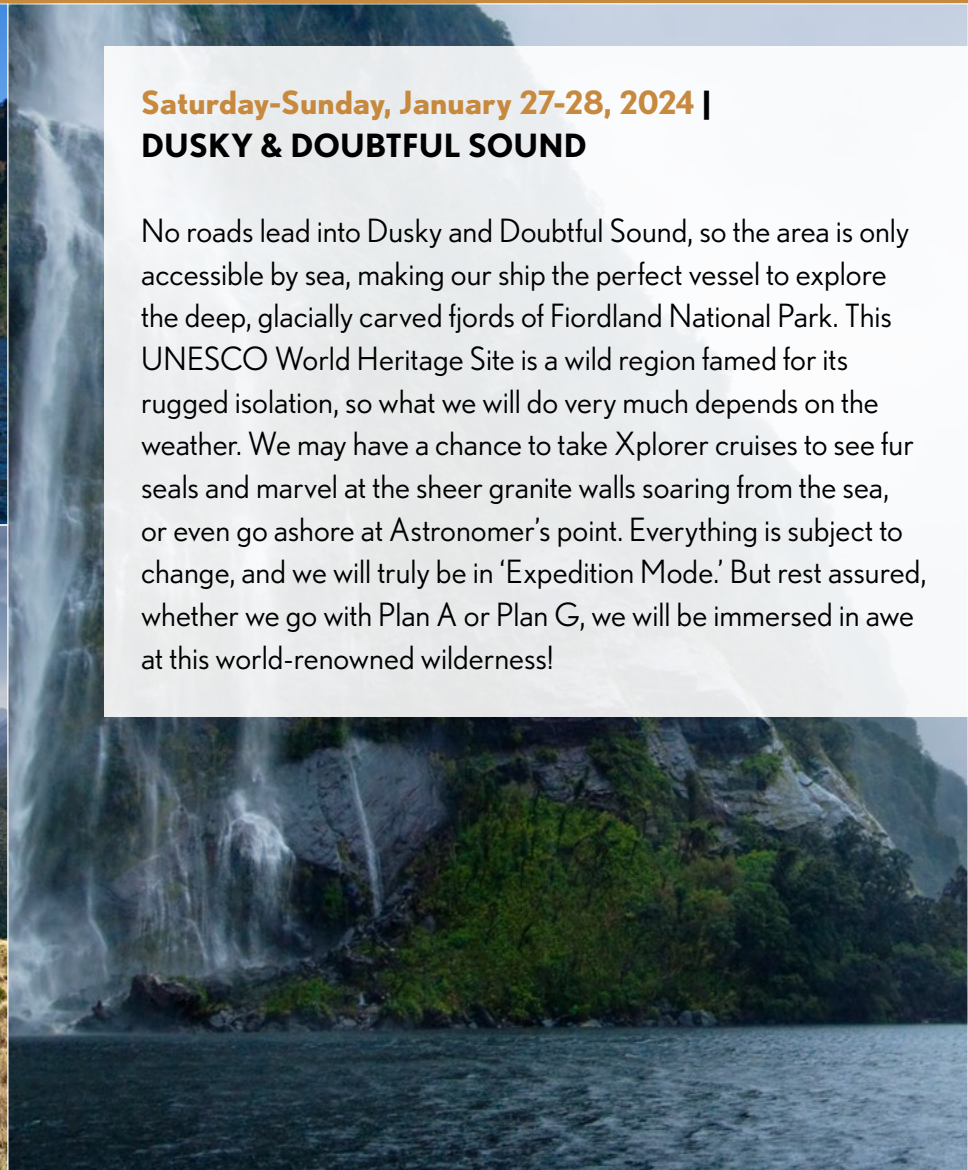




Saturday-Sunday, January 27-28, 2024 |

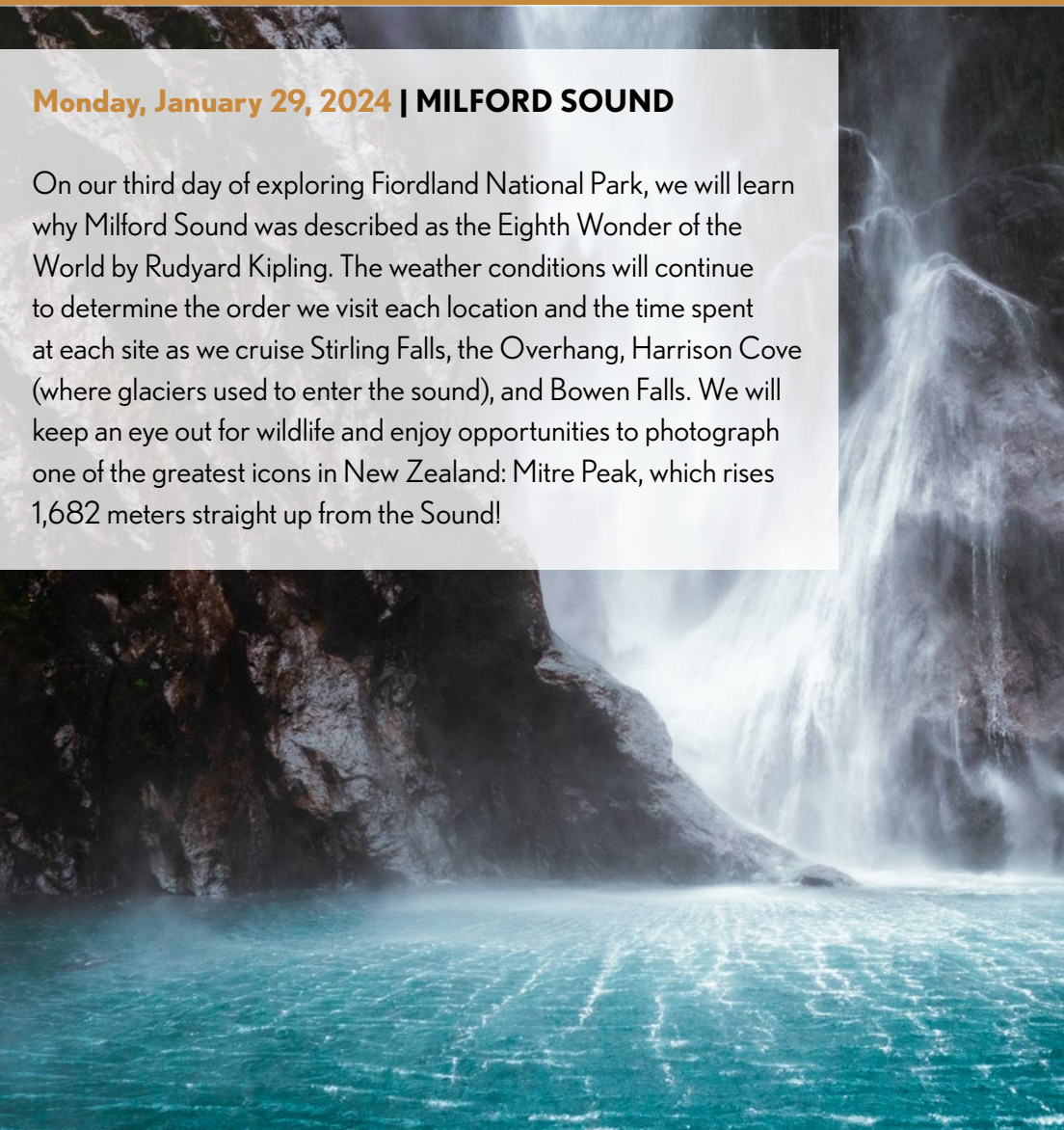
DUSKY & DOUBTFUL SOUND

No roads lead into Dusky and Doubtful Sound, so the area is only accessible by sea, making our ship the perfect vessel to explore the deep, glacially carved fjords of Fiordland National Park. This UNESCO World Heritage Site is a wild region famed for its rugged isolation, so what we will do very much depends on the weather. We may have a chance to take Xplorer cruises to see fur seals and marvel at the sheer granite walls soaring from the sea, or even go ashore at Astronomer's point. Everything is subject to change, and we will truly be in 'Expedition Mode.' But rest assured, whether we go with Plan A or Plan G, we will be immersed in awe at this world-renowned wilderness!



Monday, January 29, 2024 | MILFORD SOUND

On our third day of exploring Fiordland National Park, we will learn why Milford Sound was described as the Eighth Wonder of the World by Rudyard Kipling. The weather conditions will continue to determine the order we visit each location and the time spent at each site as we cruise Stirling Falls, the Overhang, Harrison Cove (where glaciers used to enter the sound), and Bowen Falls. We will keep an eye out for wildlife and enjoy opportunities to photograph one of the greatest icons in New Zealand: Mitre Peak, which rises 1,682 meters straight up from the Sound!





Tuesday, January 30, 2024 | AT SEA & SOLANDER ISLANDS CRUISE

The Maori name for this trio of uninhabited volcanic islets is Hautere, which translates to “flying wind.” Lying to the south of the South Island, these islets have never been inhabited apart from brief marooning or shipwrecks. The Solander islands are a designated Important Bird area: fernbirds, snipe, and white-fronted terns call the islands home, and common diving petrels and Buller’s albatross breed here. We will cruise the islands from the ship, watching birds soar through the skies and hoping to catch a glimpse of migratory whales—and if the ‘flying wind’ is tame, we may even launch the tender boats to approach the islands more closely.

Wednesday, January 31, 2024 | BLUFF (DISEMBARKATION 8 AM)

We will disembark in Bluff and take included coach transfers to Queenstown International Airport, where commercial flights are widely available.



CATEGORY

CORAL DECK STATEROOM

PROMENADE DECK STATEROOM

EXPLORER DECK BALCONY STATEROOM

BRIDGE DECK BALCONY SUITE

PRICING PP

EARLY BIRD: \$5,999 PP REGULAR: \$7,799 PP

EARLY BIRD: \$7,999 PP REGULAR: \$10,399 PP

EARLY BIRD: \$9,999 PP REGULAR: \$12,999 PP

EARLY BIRD: \$13,999 PP REGULAR: \$18,199 PP

PRICING DOES NOT INCLUDE NDAS (TAXES, FEES, & GRATUITIES) OF \$599 PP

faq

ACTIVITY LEVEL

This trip requires a high level of mobility as you must be able to walk long distances with varying steepness and heights; tours will involve walking on rocky boulders or uneven terrain, gentle hiking uphill and getting in and out of zodiac boats from the ship to shore. This trip is not suitable for canes, scooters, or wheelchairs.

FLIGHTS

All flights should arrive into **Wellington International Airport (WLG)** and depart from **Queenstown International Airport (ZQN)**.

AIRFARE

Please check our airline discounts page for the latest discounts:
<https://www.olivia.com/airfare-specials>




oliviaTM



CALL YOUR OLIVIA TRAVEL CONSULTANT
USA & CANADA: 800-631-6277 INTERNATIONAL: 415-962-5700 X1



 **SHARE**